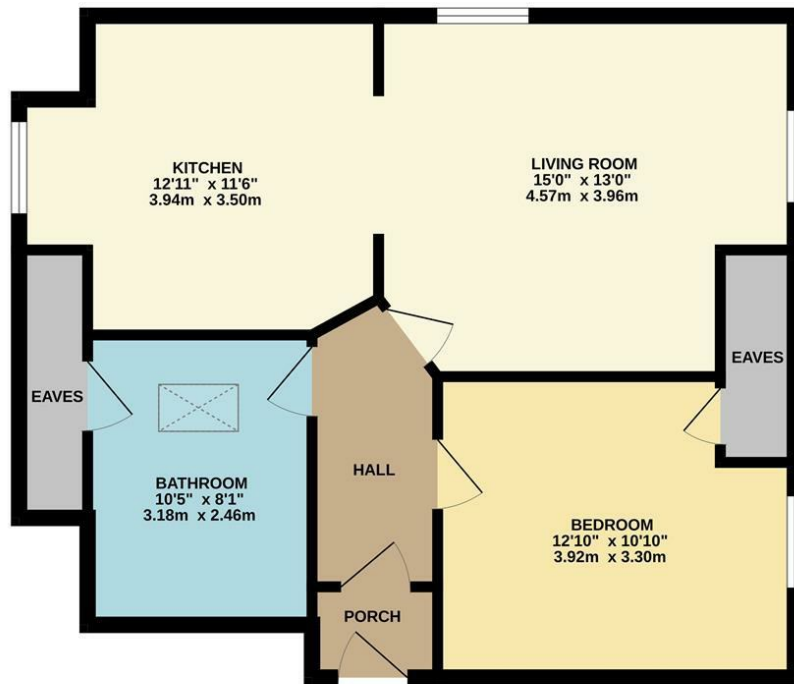


THIRD FLOOR
628 sq.ft. (58.4 sq.m.) approx.

Ansell Court Ansell Way, Warwick
£995 Per Month

charlesrose.



TOTAL FLOOR AREA : 628 sq.ft. (58.4 sq.m.) approx.
Whilst every attempt has been made to ensure the accuracy of the floorplan contained here, measurements of doors, windows, rooms and any other items are approximate and no responsibility is taken for any error, omission or mis-statement. This plan is for illustrative purposes only and should be used as such by any prospective purchaser. The services, systems and appliances shown have not been tested and no guarantee as to their operability or efficiency can be given.
Made with Metropix ©2025



Positioned on the top floor of the popular and well-maintained Ansell Court development, this fully furnished one-bedroom apartment offers a generous, light-filled living space in a secure and convenient location.

The property benefits from one allocated parking space within the gated development and secure buzzer entry to the communal areas. Inside, a welcoming hallway leads into a bright and airy open-plan living and dining room, perfect for relaxing or entertaining. The spacious kitchen is fully fitted with a range of base and wall units, integrated oven and hob, and comes complete with a freestanding fridge, freezer, washing machine, and dishwasher.

The apartment is offered fully furnished, providing a stylish and comfortable home that's ready to move straight into. The large double bedroom offers plenty of space, and there is a modern bathroom with a three-piece suite and shower over the bath.

EPC Rating C
Council Tax Band B

Holding Deposit £225
Security Deposit £1145

charlesrose.

- 01926 832411
- hello@charlesrose.co.uk
- charlesrose.co.uk

